

# Quick Guide

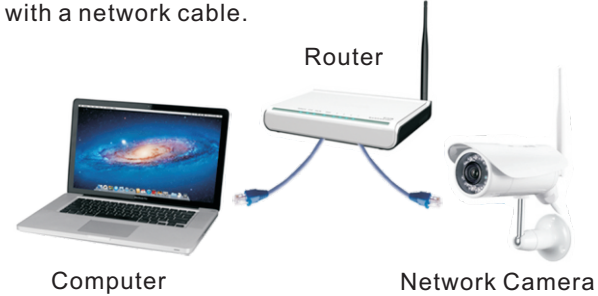
**Important**  
Please read this manual carefully before installation.

**Start Here**

## Ready, set up, go!

### Connect the camera to the network

First time to use, connect your camera to router with a network cable.



### Install Camera Softwares

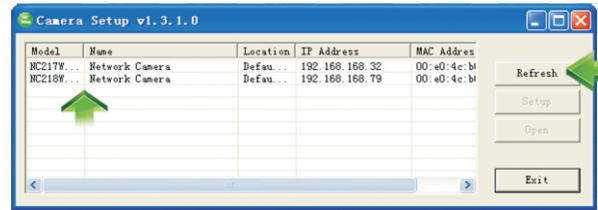
Insert the CD, and click "Auto Run", you'll see: Then install "Camera Setup", "Camera Live" and "Multi-Live".



First time to view in the browser, Windows will ask whether to install an "Active X". It's perfectly safe. Click Allow to install.

## View on PC

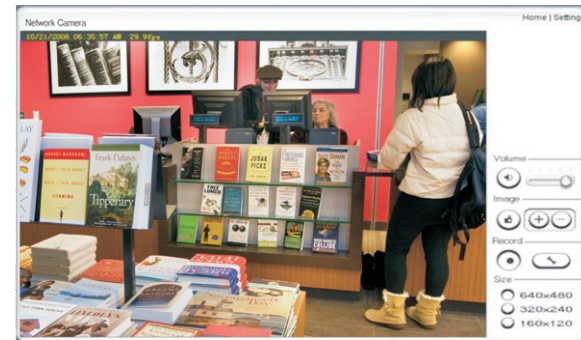
Double click  then appears:



The router automatically gives your camera an IP address. If not, click "refresh" till it shows up. Double Click the IP address to run the camera. You'll see:



Click "Enter", in the verification box:  
User Name: **admin**  
Password: **admin**  
Click "OK" and enjoy yourselves!

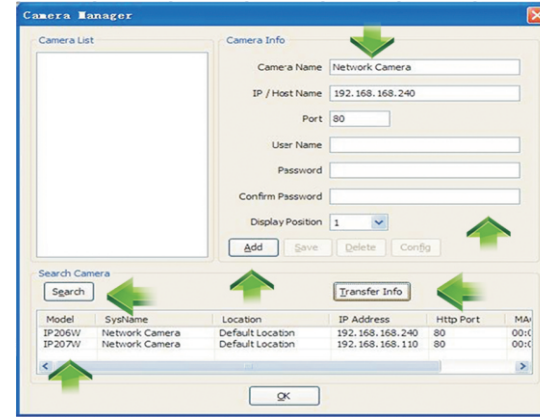


## Multi-Live

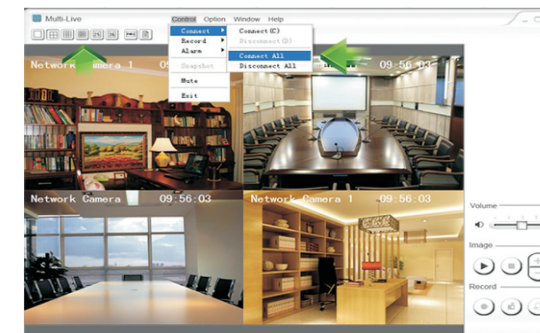
Double click  then appears:



Click "Option" then "Camera Manager", then appear:

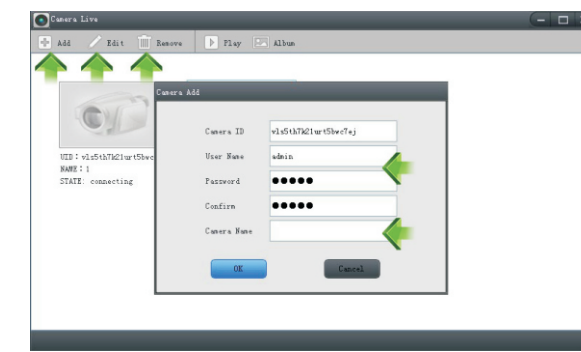


"Search", Choose camera "Transfer Info"  
User Name: **admin** Password: **admin**  
Change Camera name, Then "Add", "OK"  
Then "Control", "Connect", "Connect All"  
you'll see:

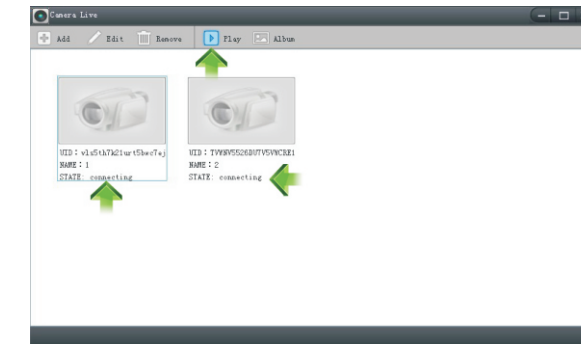


## View on PC through P2P

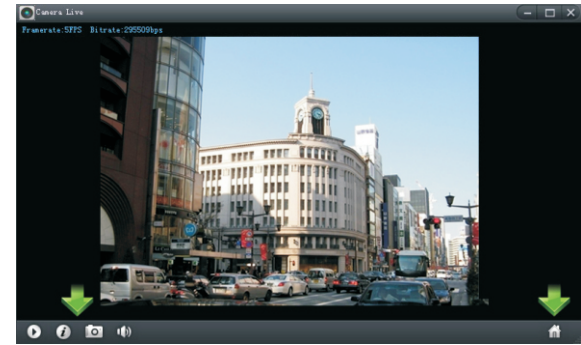
Double click  then appears:




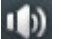



Click "Add" to add camera: Input camera ID, User Name and Camera name. Then it's done. Click "Edit" to change the already input information.



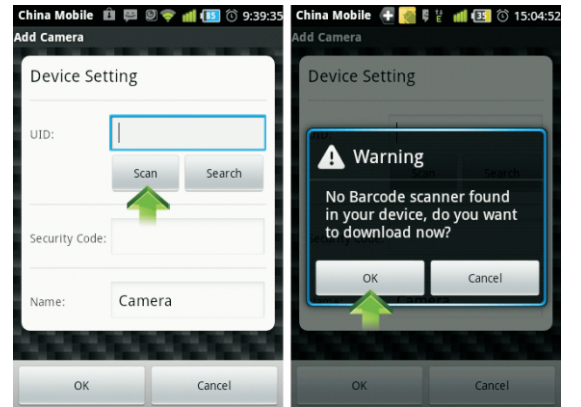
See whether the state is "On line". If not, wait a few Seconds till it's on line.. Then **choose camera** and click "Play", you'll see the video.



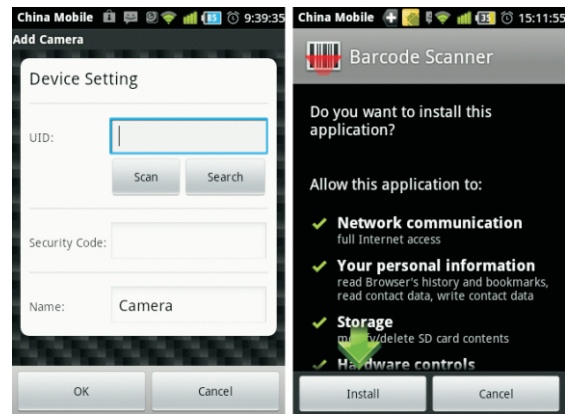
-  Video Pause
-  show transmission info
-  Snapshot, save really fast behind the screen
-  Hearing the voice
-  Back to main manu

## Install the scanner for iPhone, iPad and Android

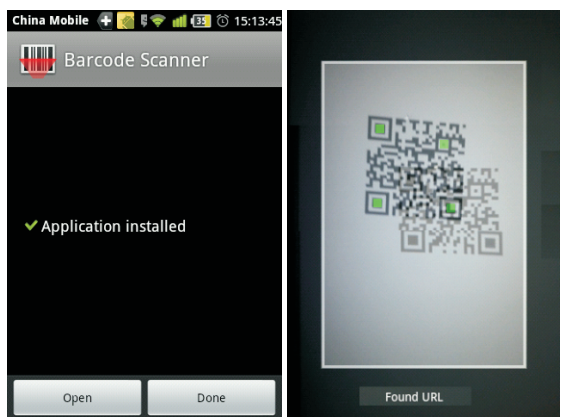
First time to use scan function. Press "Scan".



Press "OK" to download the Barcode Scanner.



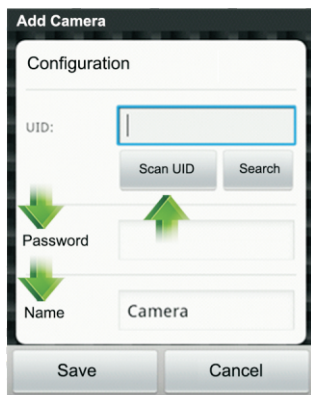
It's downloading behind the screen. It's 507 KB. Please wait 2-30 seconds. Depends on the WiFi Speed. When finishing downloading, it automatically shows up the installation screen. Press "Install".



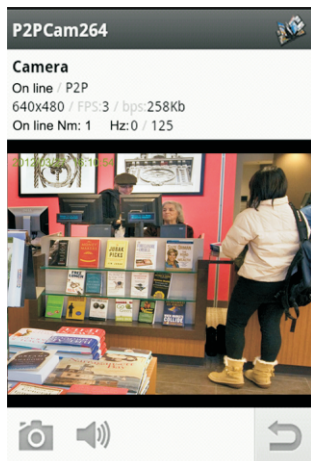
Then press "Open" or "Done" to finish installation. Now enjoy scanning the dimensional barcode.

## View on Android

Install software "P2PCam 264". Open it, you'll see:



Type the UID or Scan the UID. Input password, and name. Then click "Save".

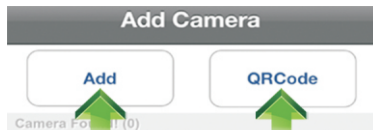


For snapshots Back

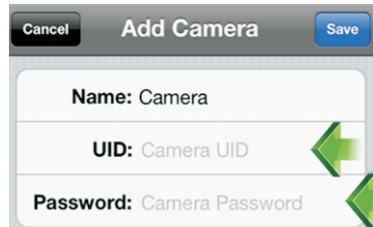
For hearing the voice

## View on iPhone, iPad

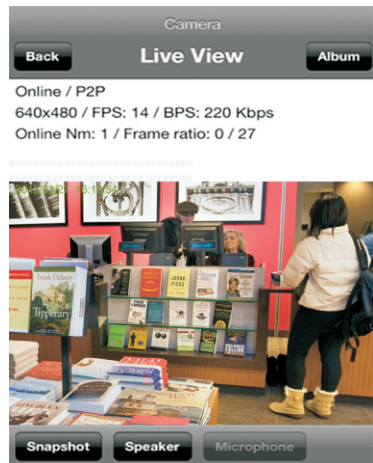
Install software "P2PCam 264". Open it, you'll see:



Click "QRCode" to scan UID. Click "Add" to manually input UID.



Input "UID" and "Password". Then you'll see:



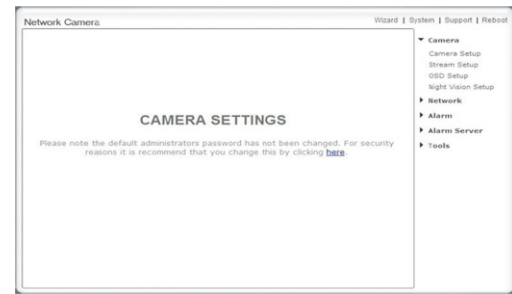
"Snapshot" for getting pictures. "Speaker" for hearing the voice.

## Wireless Setup

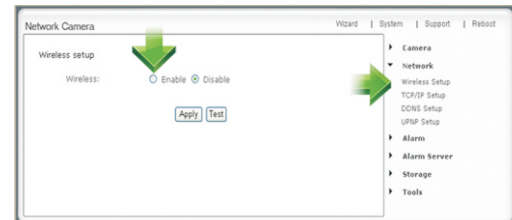
Click on "Setting".



Then appear:



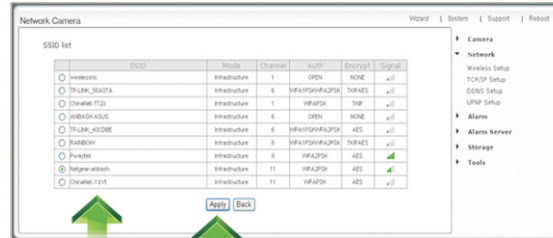
Click "Network", then "Wireless Setup".



Click "Enable", then appear:



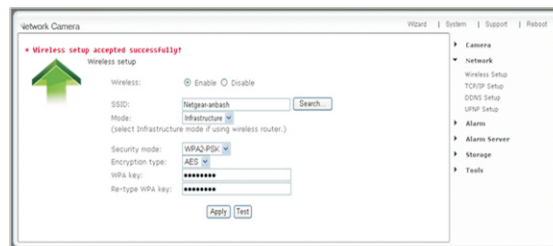
Click "Search" to find your WiFi.



Choose your router SSID(WiFi), Click "Apply", then appear "Wireless Network selected!".



Then input your router WPA (WiFi Password) and click "Apply". You'll see: "Wireless Setup Accepted Successfully!"



**Finished!**

Now you can unplug the network cable!

## Frequently asked questions

- Q: How many users can view the same camera at the same time?  
A: 16
- Q: How many cameras can we view in one window?  
A: 36
- Q: How many cameras can we view in the browser?  
A: Countless. Depends on the network speed.
- Q: When the camera is viewing in the browser, can we use the same PC and view the same camera in another browser window?  
A: No, the camera knows it's already open.
- Q: Can we use "Camera Setup" and "Multi-Live" at the same time in the same computer?  
A: Only one of them will work alright, depends on who grabs the IP first.
- Q: Can we add DDNS in the Multi-Live to view videos in one software window and how many would it support?  
A: Yes. Of course. Up to 36.
- Q: Using P2PCam 264, why I only see black screen in my iPhone, iPad, Android?  
A: The video size is too big. The network speed is too slow. Get to the setting, choose low quality, then you'll see fluent videos. (Details see the manual in CD)
- For more FAQ see the manual in CD.