

# Firmware 2.0 for IPCorder

## Getting started



# Getting started with firmware 2.0 for IPCorder

## First run

Welcome to IPCorder firmware 2.0. This guide will help you with basic actions like adding cameras or viewing recorded video.

If you have just upgraded to 2.0 version:

- Enter the IP address of your IP Corder into your internet browser. The URL you have used before is still valid.
- Use the same login information as before.

If you have just bought a new IPCorder with 2.0 firmware version:

- Read the Quick Installation Guide (included in the package) to find the IP address of your IPCorder.
- Enter the IP address into your internet browser.
- You will see the wizard called "Configuration Guide". Follow its steps to complete a basic configuration of your IPCorder.

You are now logged in and you can start with firmware 2.0. for IPCorder.

## How to change default password

The screenshot shows the IPCorder web interface. The top navigation bar includes the IPCorder logo, a 'Video' icon, a 'Settings' icon (highlighted with a red box and circle 1), and user information: 'admin | 2.0.0 (h52a2863) | 2011-07-07 13:27:39 | English | Log Out'. The left sidebar menu has 'Devices', 'Users', 'Schedules', 'Actions', 'Configuration', 'System', 'Preferences' (highlighted with a red box and circle 2), 'User Preferences', and 'Change Password' (highlighted with a red box and circle 3). The main content area is titled 'User Account' and contains a 'Change Password' section with three input fields: 'Current password: \*\*\*\*\*', 'New password: \*\*\*\*\*', and 'Confirm password: \*\*\*\*\*' (the entire form area is highlighted with a red box and circle 4). At the bottom right of the form is an 'Apply' button with a checkmark icon (highlighted with a red box and circle 5).

- Go to Settings [1] – Preferences [2] – Change Password [3]
- Fill in current and new passwords [4] (default password of the admin user is "admin")
- Apply changes [5]

## How to add a camera

The screenshots illustrate the following steps:

- Go to Settings [1] – Devices [2], click on Add New – Discover [3].
- Select your camera brand or "Any brand" and click on Start Discovery [4] button.
- When the discovery process finishes, you will see discovered cameras. Select cameras you want to add [5].
- Fill in the camera credentials if needed [6]. This point may vary a little for different camera vendors or models. In some cases you'll have to set the credentials directly on the camera first and then fill them in the form.
- Add Selected Devices [7] and switch to the Video [8] viewer.

# Getting started with firmware 2.0 for IPCorder

VIVOTEK IP7361  
Hunt GENERIC  
Ganz ZN-C2M  
Axis M1114



- Add the new camera to the grid using drag'n'drop [9]. You can resize the camera view over more cells [10] or move it to another cell. From the Select Stream menu [11] you can choose a specific stream manually or choose Auto for automatic stream selection.
- When you have finished, click Save view [12] to save just specified layout.

## How to set up recording

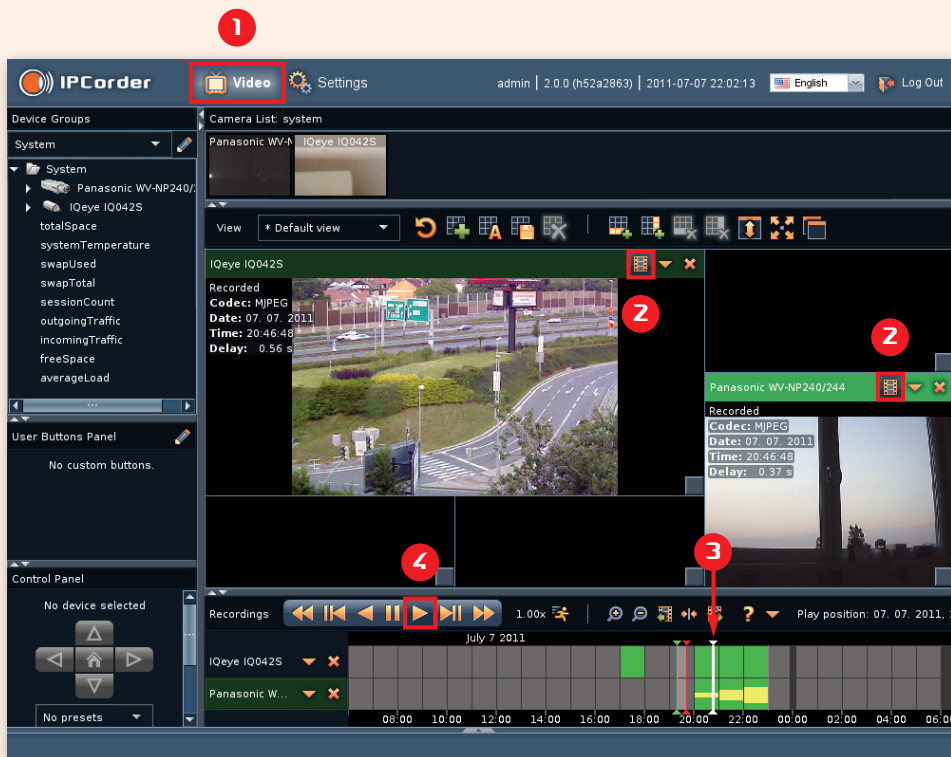
The screenshots illustrate the following steps:

- Go to Settings [1] – Devices [2], click on the camera in left menu [3] and select the Video tab [4].
- Set default recording mode [5], for example you can check "Trigger by motion detection" if you want use this feature to record for example an MJPEG 720x480px stream from the chosen IP camera whenever this camera detects a motion.
- Add Recording Mode [6].
- Configure recording mode [7], for example you can check "Permanent" if you want use this feature to record for example an MJPEG 720x480px stream from the chosen IP camera whenever this camera detects a motion.
- Apply [8].
- Go to Schedules [9] – Schedules [10], select the schedule [10].
- Configure recording periods [11], for example you can check "Permanent" if you want use this feature to record for example an MJPEG 720x480px stream from the chosen IP camera whenever this camera detects a motion.
- Apply [12].

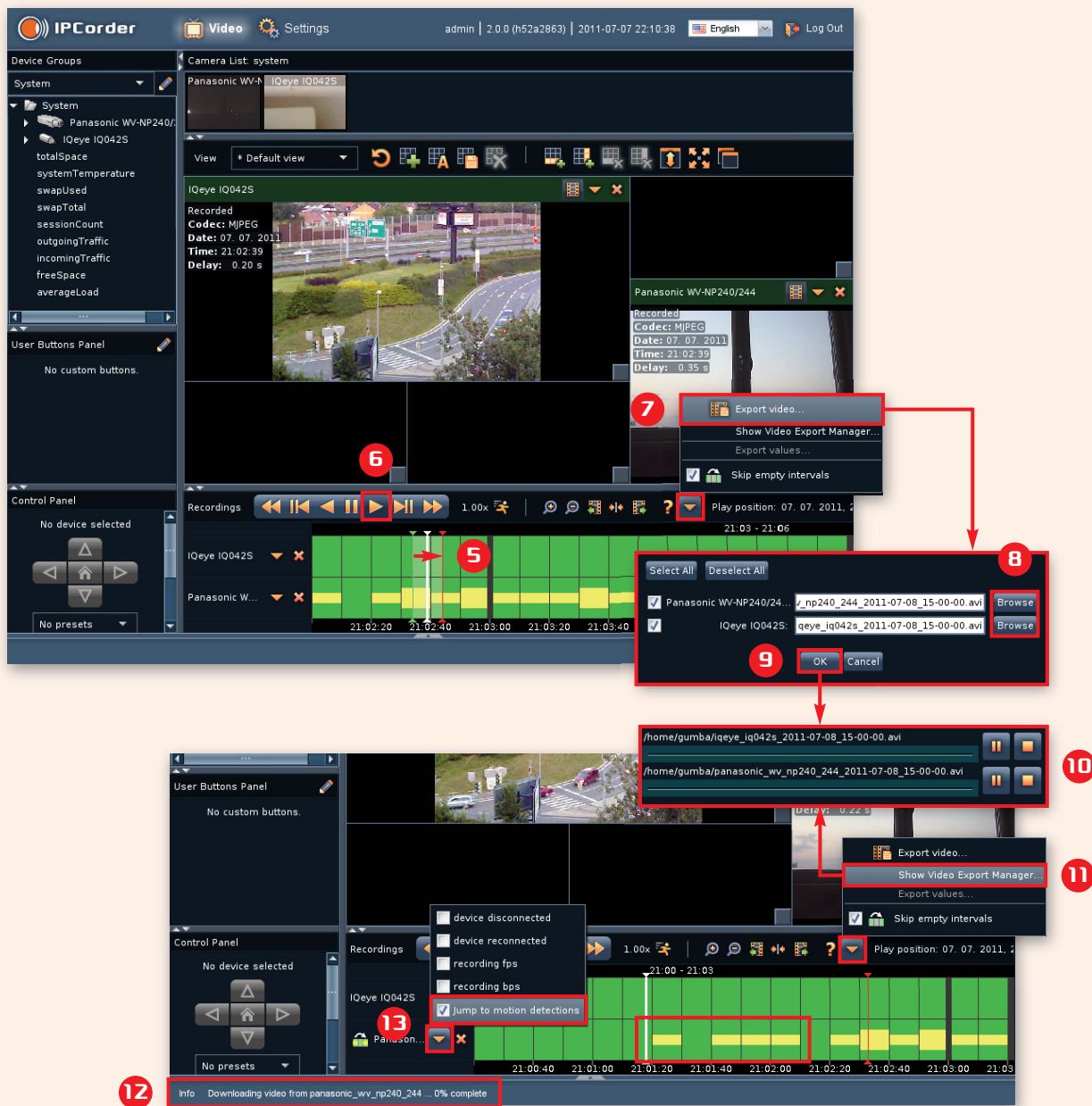
# Getting started with firmware 2.0 for IPCorder

- If you are satisfied with the setup at this point, you can skip the advanced conditions by clicking the Apply [8] button. If you wish to set the advanced options, continue...
- When you need more advanced conditions, press the Add Recording Mode [6] button and the new action will be shown. Now permanent recording during weekends is set [7]. Click the Apply [8] button to save changes. **In this configuration, IPCorder will record a video stream from this camera whenever motion is detected, but during weekends it will record this camera permanently.** You can add more recording modes and change their order to make more complex recording conditions. At any given time you can record a maximum one stream per camera.
- You can specify the weekend days and hours or create your own schedule. If you want to do so, go to Schedules [9] – Weekend (name of the schedule) [10] and set it according to your wishes. Finally, click on the Apply [12] button.

## How to view and export recordings



- Go to the Video [1] viewer and switch your camera to the "Recordings" mode [2]. The cell color will become green and the timeline will be shown at the bottom part of the screen.
- Click on the green part [3] of the timeline and click Play [4], you will see recorded video from all cameras which are switched to the "Recordings" mode. Double click on the timeline to zoom in, right click to zoom out. Use the mouse wheel for timeline scrolling.



- If you want to play in a loop, use drag'n'drop [5] to select time interval (green and red cursor), put the white cursor into the region and click on Play [6].
- To export recordings from selected interval click to Export video [7] in "More actions" menu. You will be asked which cameras do you want to export and where to save it on your computer [8]. Click OK [9] and the Video Export Manager [10] will appear.
- You can reopen it by the Show Video Export Manager [11] option from "More actions" menu.
- Information about the download progress is also displayed on the status bar [12].
- You can also use the feature which jumps to motion detections [13] or other events. You will see only segments of the video where events were detected.

## How to add a user with specific privileges

The image consists of two screenshots of the IPCorder web interface. The top screenshot shows the 'Settings' page with the 'Users' menu highlighted. The 'Create User' button is also highlighted. The bottom screenshot shows the 'Create User' form with the following details: Username: stanley, New password: [masked], Re-enter password: [masked], Locale: English, Email: stanley@abc.com, and Permissions: Admin, User, and Custom. The 'User permissions' section is expanded, showing a list of permissions with checkboxes. The 'Apply' button is highlighted.

1. Go to Settings [1] – Users [2] and click on the Create User [3] button.

2. Enter the credentials, language and basic permissions of the new user [4]. You can specify more precise permissions [5] if you want.

3. Click on the Apply [6] and the new user will be shown in the Users [2] menu.

4. You can now log in as a new user.



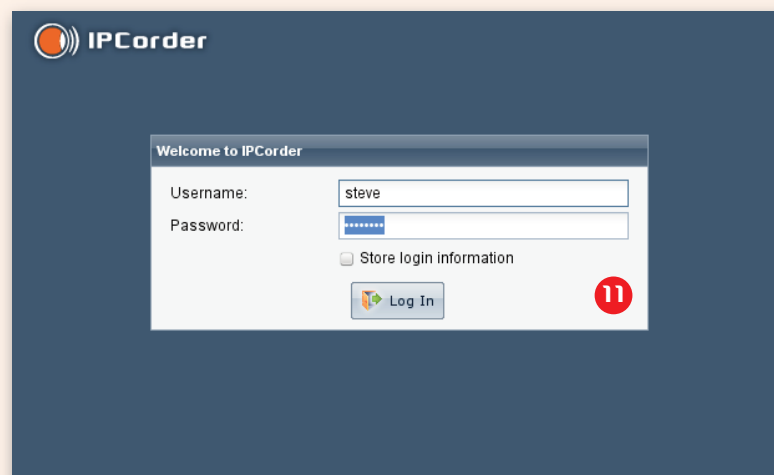
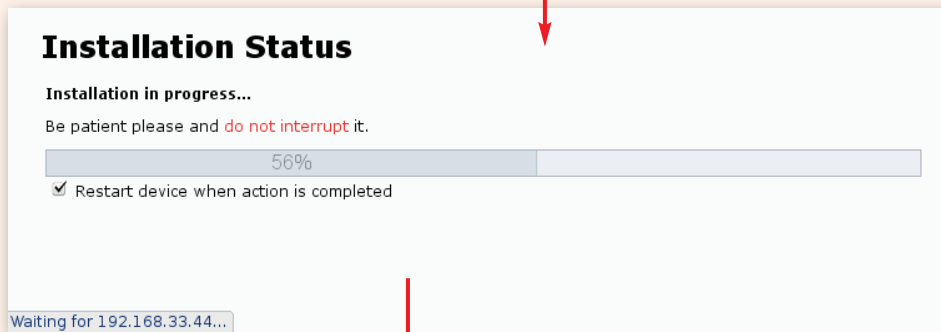
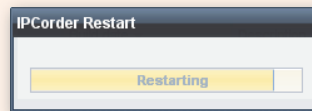
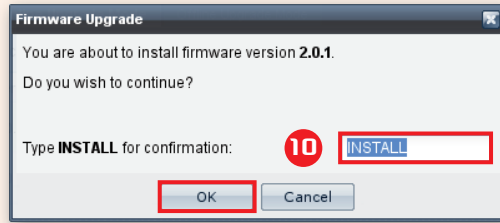
## How to upgrade firmware

The screenshots illustrate the following steps:

- Go to Settings [1] – System [2] – Firmware Upgrade [3]
- Enter your Updates Account credentials [4]. If you don't have an account, please register at <https://ipcorder.com/updates/>.
- Apply changes [5]
- Now, check for updates [6]. If you also want to see testing versions, check the box [7].
- Select the Latest stable version, click Download [8], wait until the download has completed and click Install [9].

- Go to Settings [1] – System [2] – Firmware Upgrade [3]
- Enter your Updates Account credentials [4]. If you don't have an account, please register at <https://ipcorder.com/updates/>.
- Apply changes [5]
- Now, check for updates [6]. If you also want to see testing versions, check the box [7].
- Select the Latest stable version, click Download [8], wait until the download has completed and click Install [9].

# Getting started with firmware 2.0 for IPCorder



- You will be asked for confirmation, type "INSTALL" [10] and click OK.
- The rest of installation is fully automated, **don't turn your IPCorder off during installation, it could damage the device.**
- When the installation finishes, you can log in [11].

Please don't hesitate to contact our technical support with your comments or questions.

**Thank you**  
**Your IPCorder Team**

Technical Department  
Phone: +420 296 826 562  
E-mail: [support@koukaam.se](mailto:support@koukaam.se)  
[www.ipcorder.com](http://www.ipcorder.com)

KOUKAAM a.s.  
Kaplanova 2252/8  
148 00 Praha 4  
Czech Republic  
[www.koukaam.se](http://www.koukaam.se)